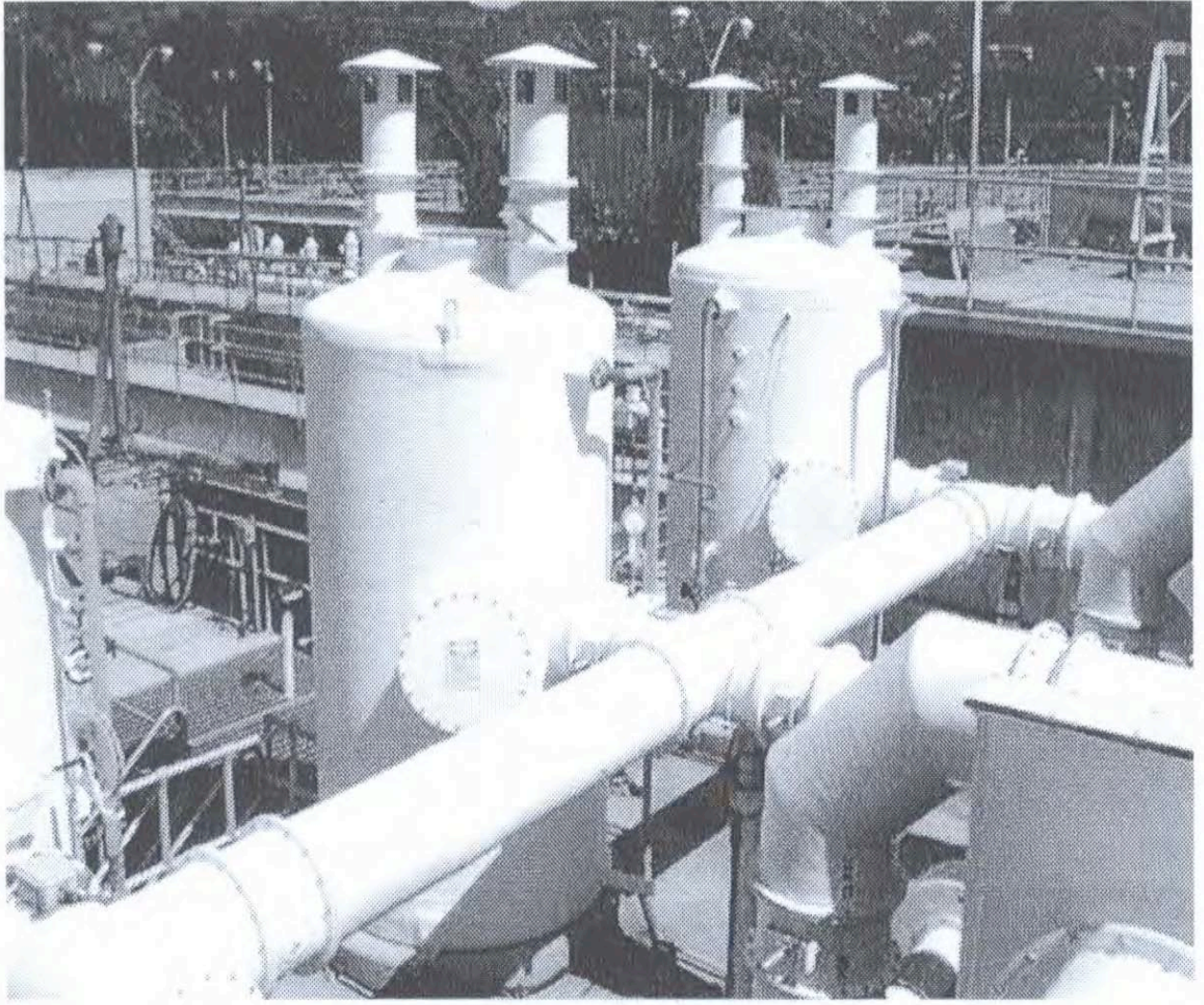


AIR CHEM SYSTEMS ,
INC.

10539 Humbolt Street
Los Alamitos, California 90720
(562) 598-7100

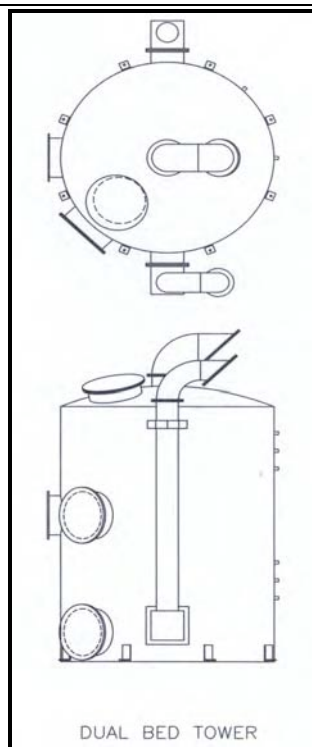
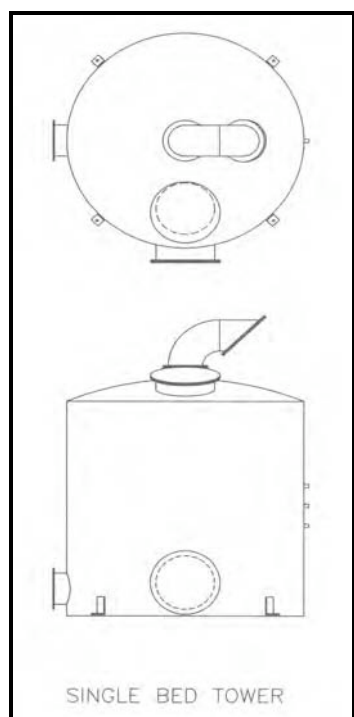
CARBON ADSORBERS



CARBON ADSORBERS

- ∞ Air Chem Systems, Inc. fabricates a complete line of round carbon adsorbers in either single or dual beds.
- ∞ Carbon adsorbers are used as a final polishing filter to capture any trace amounts of chemicals not captured by a wet scrubber or air stripper or as the primary control device where the concentration of the target chemicals are too low to justify the operating expense of a wet system.
- ∞ It will be necessary to monitor the carbon units to determine when breakthrough will occur requiring a media exchange.
- ∞ Each carbon unit comes with three test ports at various elevations in order to extract air samples for analysis.
- ∞ Smaller units are usually installed in series with one test port between them.

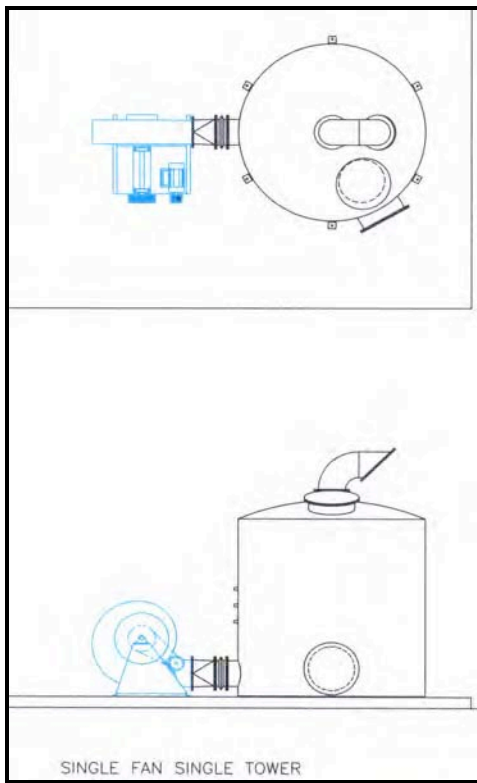
<u>STANDARD EQUIPMENT</u>	<u>OPTIONAL EQUIPMENT</u>
HOLD DOWN LUGS	SLOPED BOTTOM
DRAIN	ACCESS LADDERS
GROUNDING ROD	ACCESS PLATFORMS
FRP CARBON SUPPORT GRATING	
CARBON CONTAINMENT SCREEN	
ACCESS MANWAY	
INLET & OUTLET FLANGED FITTINGS	
CARBON	



SINGLE BED TOWER		DUAL BED TOWER	
DIAMETER	CFM	DIAMETER	CFM
4 FOOT	700	---	---
4.5 FOOT	900	---	---
5 FOOT	1100	---	---
5.5 FOOT	1300	---	---
6 FOOT	1600	---	---
6.5 FOOT	1900	---	---
7 FOOT	2200	---	---
7.5 FOOT	2500	---	---
8 FOOT	2800	8 FOOT	5600
9 FOOT	3500	9 FOOT	7000
10 FOOT	4500	10 FOOT	9000
11 FOOT	5500	11 FOOT	11,000
12 FOOT	6500	12 FOOT	13,000

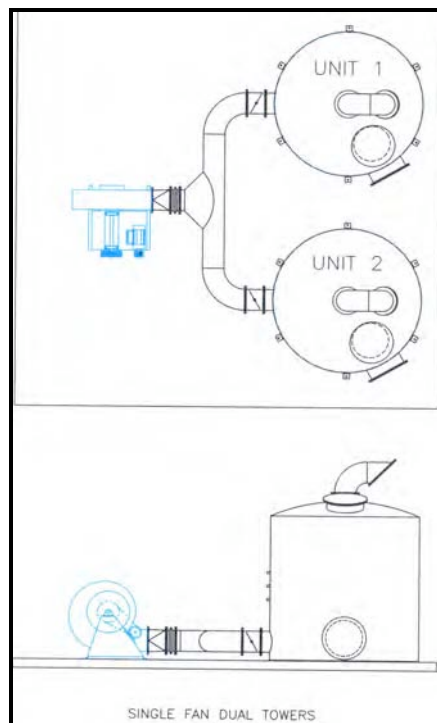
ARRANGEMENTS

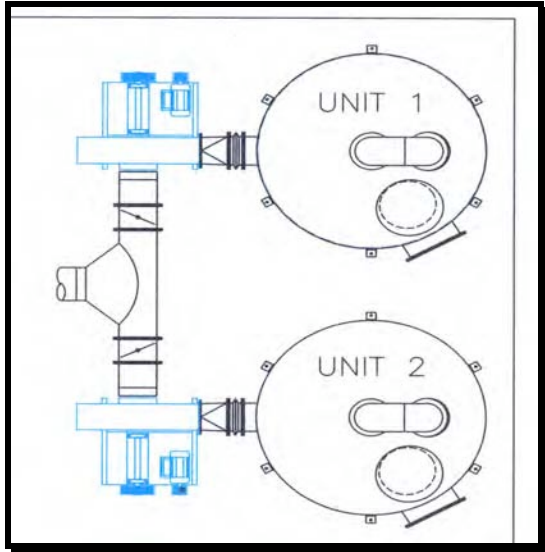
There are several installation arrangements from the basic system to multiple systems designed to facilitate change-out of carbon media without shutting down the system and multiple fans for redundancy.



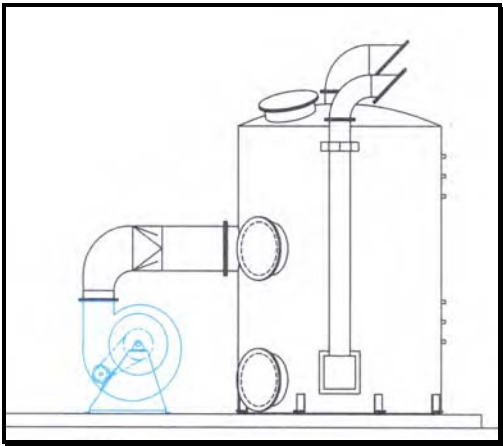
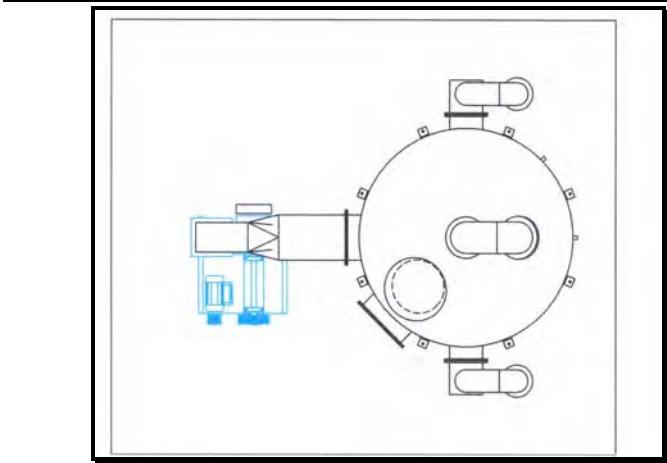
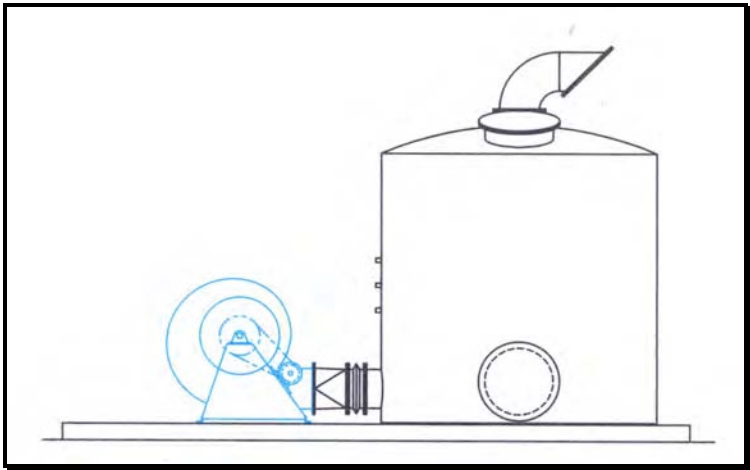
This basic setup is a single fan and a carbon unit. This arrangement requires a shutdown of the ventilation system during media change-out.

This single fan, dual tower arrangement allows for the change-out of media without shutting down the ventilation system.





This dual fan and dual tower arrangement also allows for the change-out of media without shutting down the ventilation systems and provides a level of redundancy to prevent accidental shutdown due to a fan failure.



All of the arrangements are applicable to this dual bed unit which doubles the air volume capacity for a given diameter usually applied to the larger units.